



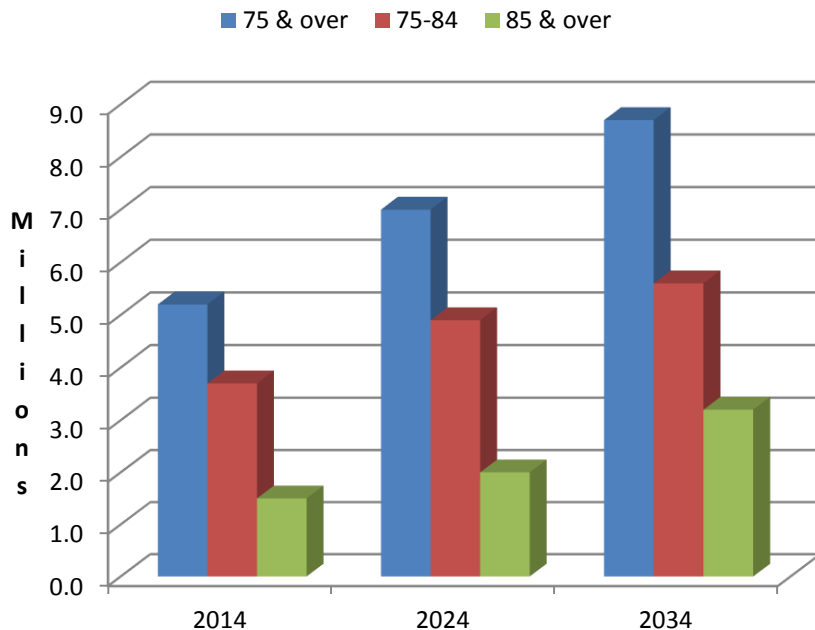
Housing health and care integration

Terrie Alafat, CEO CIH

Challenges for care



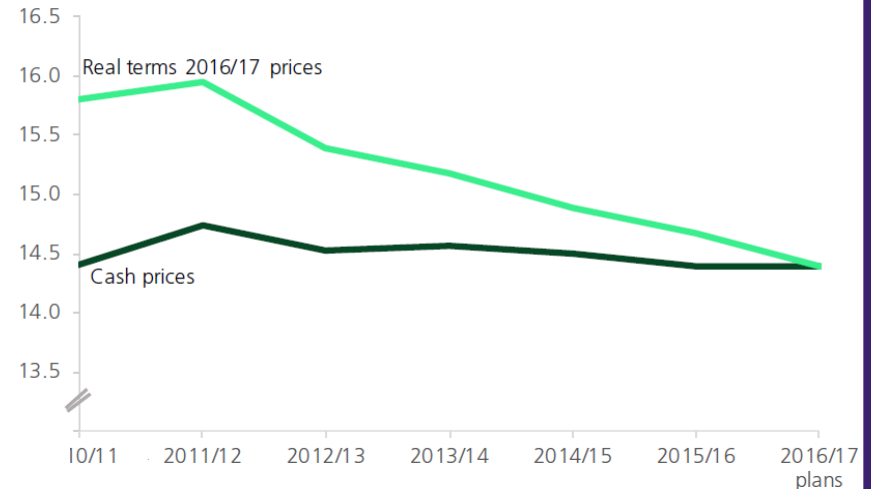
- Population changes, demand increasing



Source: ONS

- Real term cuts in funding

Figure 2: Net current expenditure (£billions) on adult social care in England



- Source: HoC briefing Adult social care funding (England)

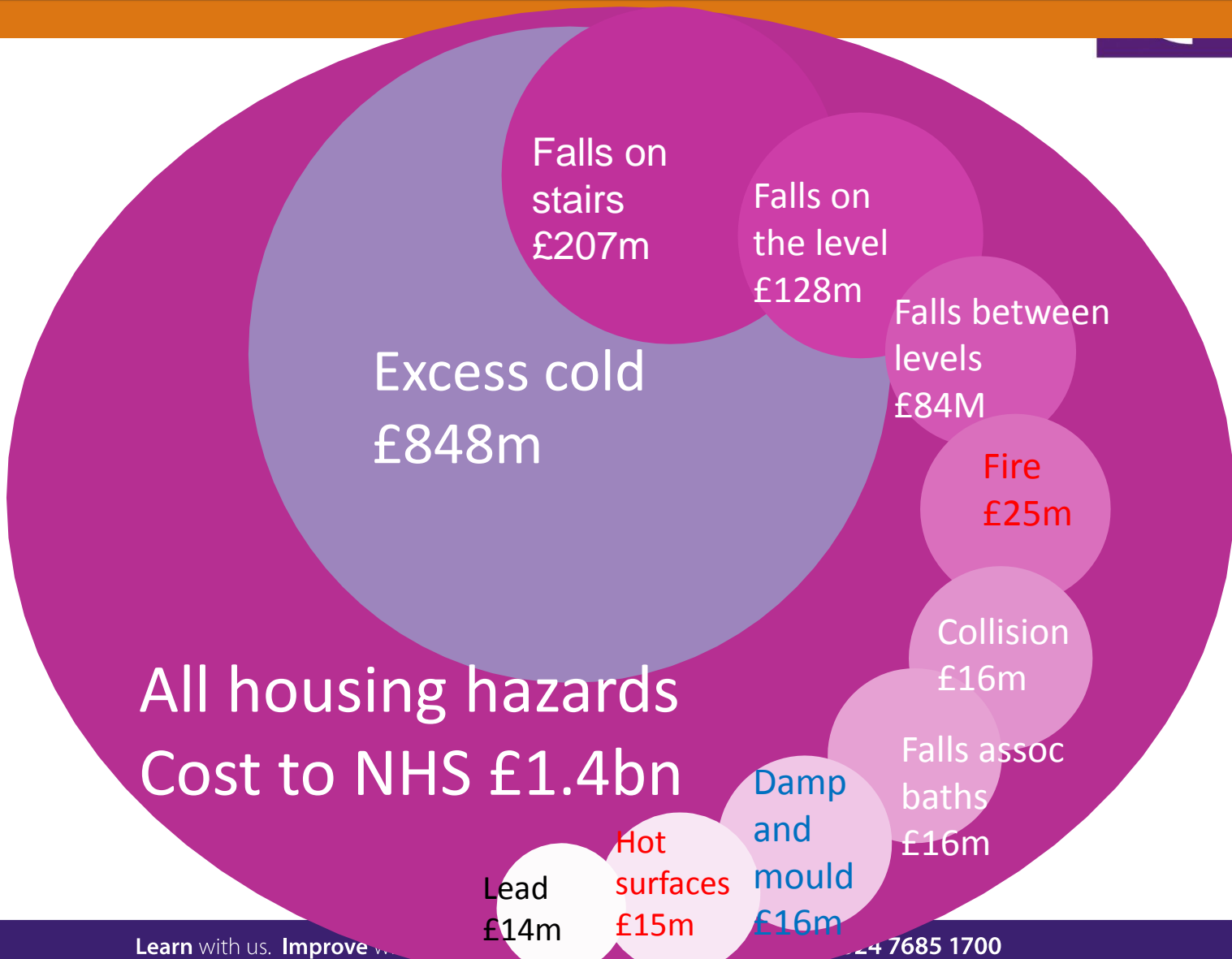
Challenges for housing



- Significant shortage of homes
 - Including supported housing
- Proposed funding framework for housing
- Crisis of affordability
- Welfare reform
- Significant rise in homelessness
 - 38% increase in 5 years



BRE Health costs of poor housing



Benefits of decent homes



Decent safe homes in good neighbourhood supports

- Physical and mental wellbeing
- Social engagement
- Activities of daily living



Relatively low cost home modifications can lead to:

- **26%** reduction in falls that need medical treatment
- savings of **£500 million** each year to the NHS and social care services in the UK*

Source: Graphic from Centre for Ageing Better

Benefits of supported homes



- Cost benefit from capital investment

	Net benefit, per person per year
Older people	£444
People with mental health conditions	£4,671
People with learning disabilities	£6,764
People with physical/sensory disabilities	£1,386
Single homeless people with support needs	£1,655

- Independent living
- Homeless prevention
- Re-ablement/hospital discharge
- Managing health and wellbeing

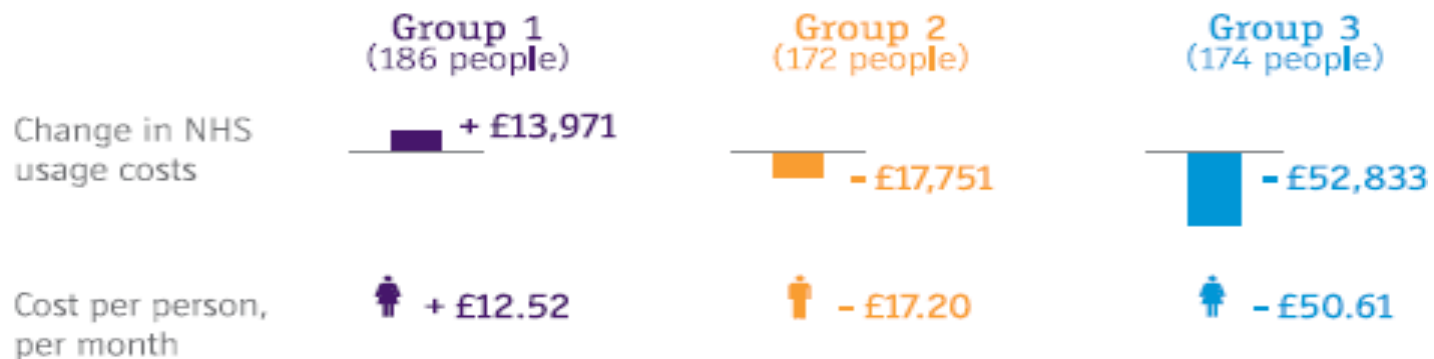
- Frontier Economics

Information and advice



- Family Mosaic longitudinal study of support to tenants over 55
- group 2 signposting
- group 3 personalised support

Figure 5: NHS usage, cost implications



How can we go forward?



Nationally

- Get funding for supported housing right
- Link between housing and welfare policy
- Better use of public sector land

Going forward



Locally

- Real integration of housing
- Shared local actions
- Build on opportunities of devolution

Key Priorities for the Nottingham Memorandum of Understanding

Partners have agreed the following five key areas for the Memorandum of Understanding to focus its activity...



Thank you for listening



Terrie.alafat@cih.org

@TerrieAlafatCIH