

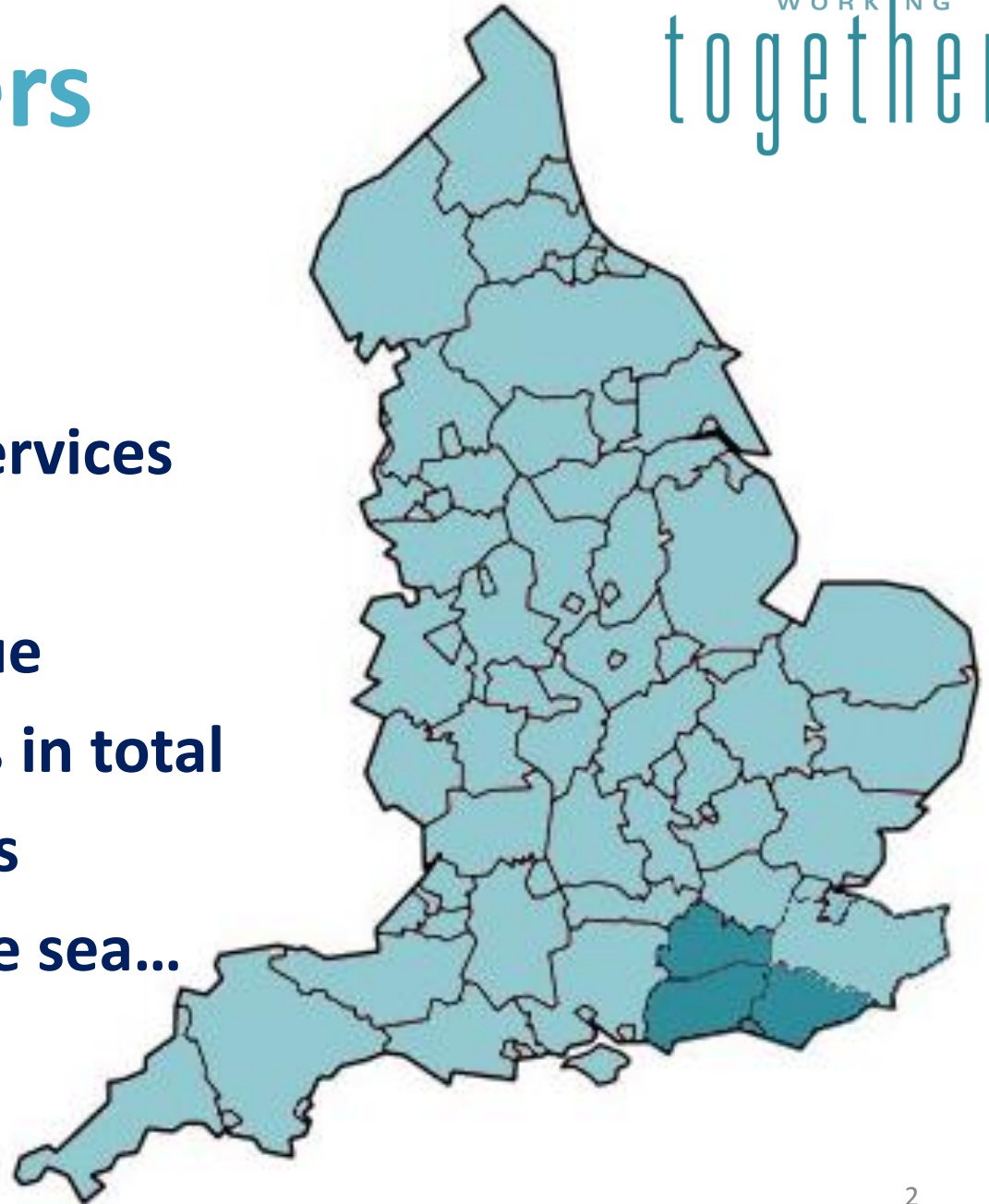
WORKING
together

**Surrey and Sussex
Emergency Services Collaboration Programme**

Ian Thomson – Surrey Fire and Rescue Service
Lee Belsten – Fire Brigade's Union - Surrey

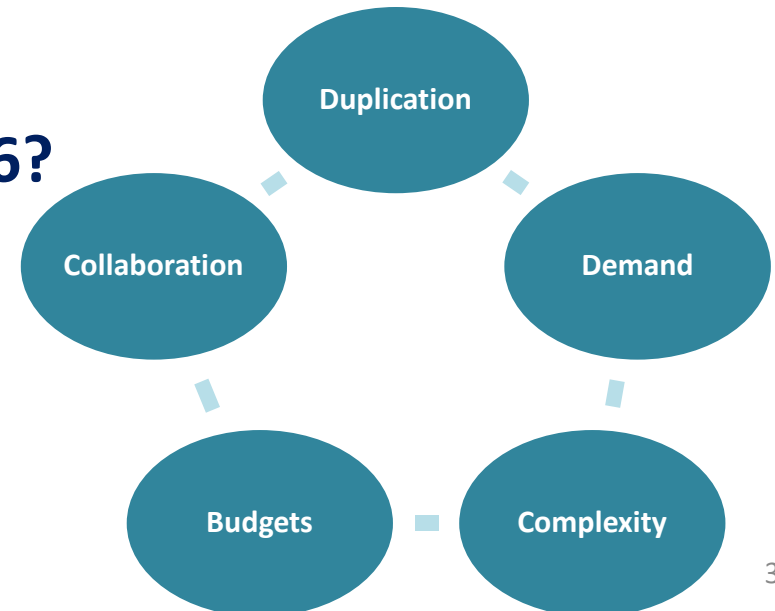
Some numbers

- 1 ambulance trust
- 2 police forces
- 3 fire and rescue services
- 15,889 employees
- £765million revenue
- 27 local authorities in total
- 2.8million residents
- From London to the sea...



Case for change

- Some duplication & overlap in service to local residents
- Demographics and demand is changing
- Strategic trends mean incidents are getting more complex
- Budgets continue to tighten - need to maintain effective capabilities
- Duty to collaborate – end 2016?



What are our aims?

WORKING
together

- Improve service to the public
- Reduce costs
- Increase resilience
- Less overlap in service provision
- Align resources with demand



Co-responding

- **NJC trial since 28th September 2015 – Surrey FRS**
- **To 6th March:**
 - 414 requests for assistance
 - 218 attendances
- **162 co-responders (330+ IECRs)**
- **22 Fire Stns (7 on-call)**
- **28 officers (FDS and Day staff)**
- **Co-responding hours – 2809 (Jan'16)**
- **Average 3 min “save” from SECamb attendance**



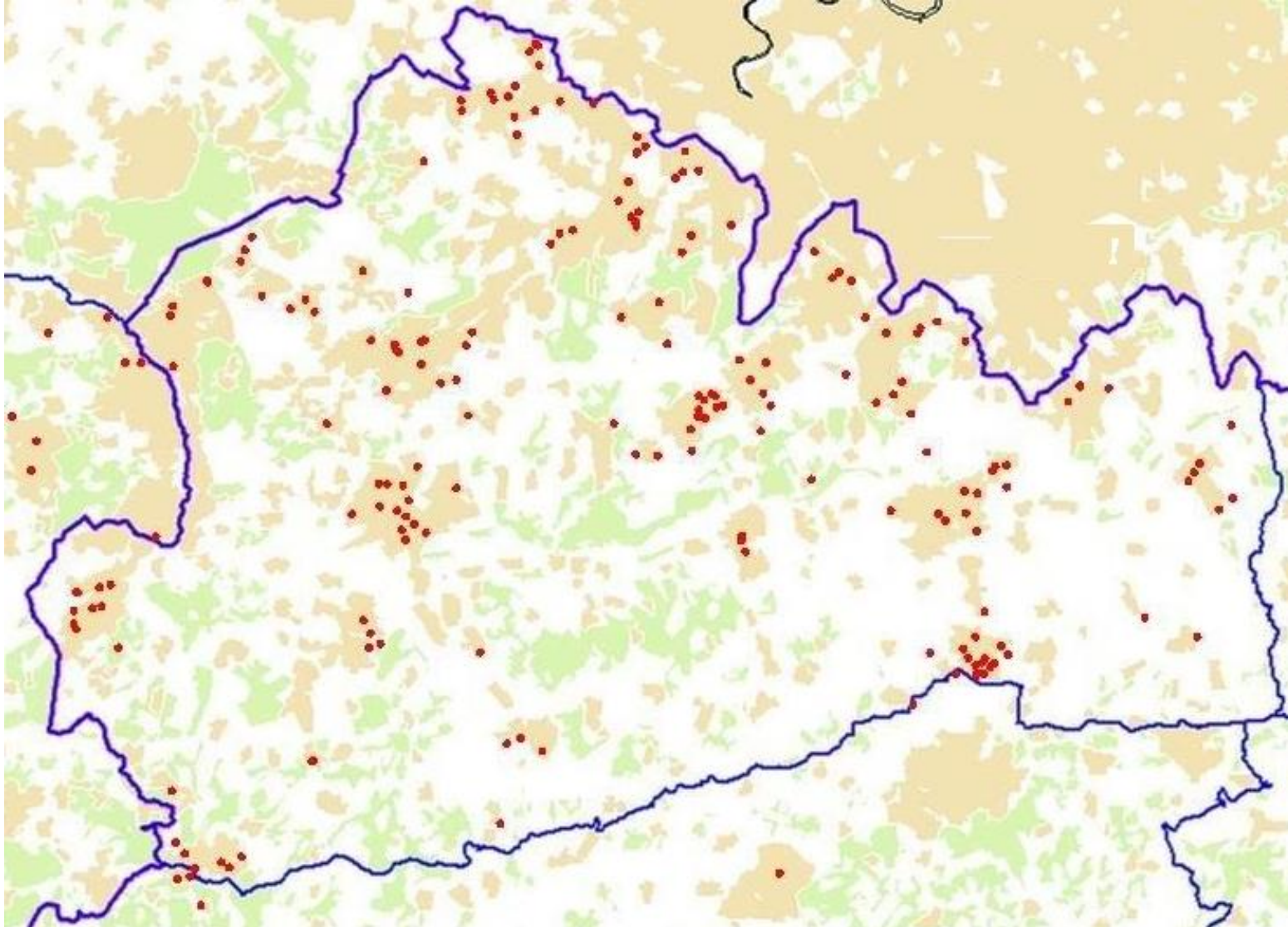
Co-responding

- **Training package and MoU in place with SECAMB, which includes clinical governance**
- **Continued engagement with representative bodies**
- **Many lessons identified & changes made**
- **Resource management in place**
- **Feedback generally positive**

Feedback

- ***“The fire crew were excellent on scene, doing chest compressions, assisting generally and were invaluable when the patient had to be moved from the third floor to the ambulance. We managed to get a good output on the patient and when I last checked, he was still alive on ITU.”*** Paramedic
- ***“I didn’t join the Fire Service to be a medic but I did join to save lives. Being a co-responder means I can help more people that need it and deliver the kind of service that our residents expect.”*** Crew Commander / Area FBU Rep

Red 1 distribution



What next ...

- **Expand to include Red 2s (Excl. maternity cases)**
 - Initially: Fitting, chest pain, unconscious and breathing difficulties
 - Then: stroke / neurological, falls <12ft and trauma
 - Then: other Red 2s

Service delivery outcomes

WORKING
together



Surrey Fire and Rescue Service is now supporting SECamb for gaining entry

Gaining Entry (For 2015):

- 644 attendances in Surrey
- FRS intervention on 500 occasions
- 48 required boarding up
- Average response <9mins
- Average on scene time 26.5 mins

Vulnerable missing persons

- Information sharing / extra sets of eyes
- Thermal imaging / proactive search



National recognition

- **iESE Gold award for working together 2016**
- **IECR / co-responding**
- **Gaining entry**
- **Missing persons**



Contact details:

ian.thomson@surreycc.gov.uk



@IanThomsonFire

lee.belsten@fbu.org.uk